



SPECIFICATIONS

MODEL DX760

UNDERMOUNT TYPE

GENERAL

Fine quality sink bowl formed of 18 gauge
Type 304 18/10 nickel bearing stainless steel

DESIGN FEATURES

Bowl Depth: 9"

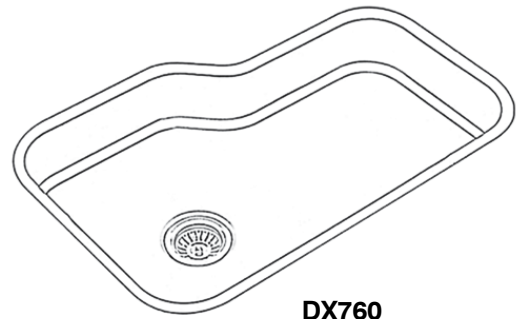
Finish: European Finish

Underside: Sound absorbing pads and special paint
applied to dampen sound

Drain Opening: 3-1/2"

Sinks include all basket strainers, mounting
hardware and template.

PROTECT YOUR SINK! Grids prolong the life
of your sink's finish.

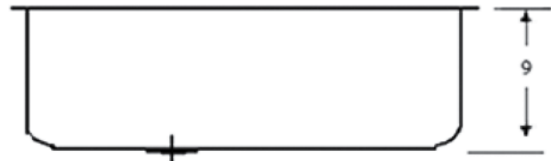
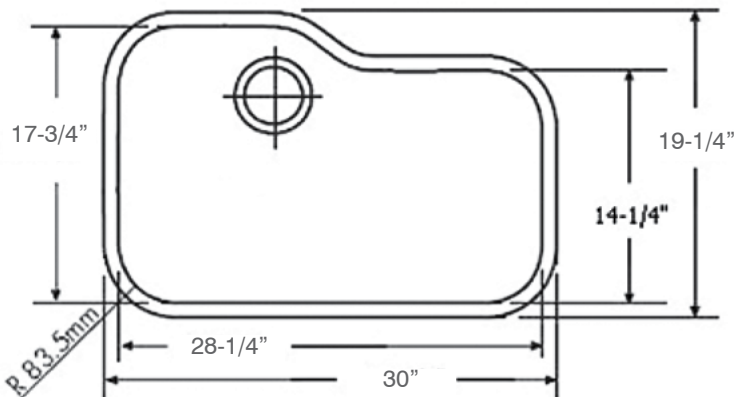


DX760

OPTIONAL ACCESSORIES

GR760SS	Stainless Steel Bottom Grid
CC760HW	Hardwood Cutting Board & Colander Set

SINK DIMENSIONS (INCHES)



Minimum Cabinet Size	30"
Ship Weight	17 Lbs.

Installer Notes: Ukinox always recommends that you give the sink to the granite fabricator. If you are going to use a cutting board, provide that to the fabricator as well. Please note that we do include a template with each sink, but there can always be a slight variation. In addition, many of our templates are perforated so you can tear off the perforation for cutting board applications.



*Template and countertop mounting
clips are packed with every sink

Ukinox reserves the right to change product specifications without notice.